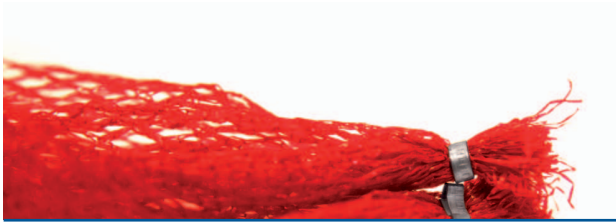
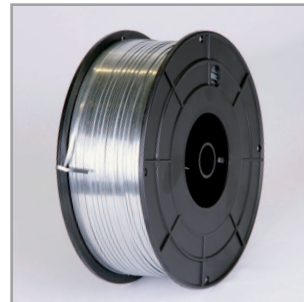


WIRE FOR MESHING MACHINES

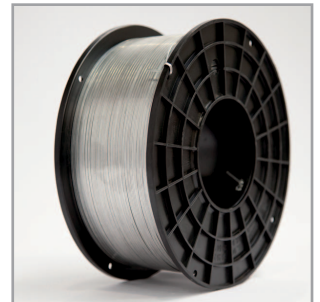


Wires which are generally used in horticulture. The hot dip galvanizing process to which they are subjected ensures excellent results against corrosion both before and after forming the staple, thus protecting the image of the packaged product and preventing the onset of rust, even for seafood products.

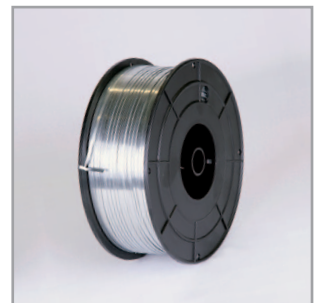
Thanks to the selection of materials and our production process, we obtain wire with mechanical properties that are ideal for this use.



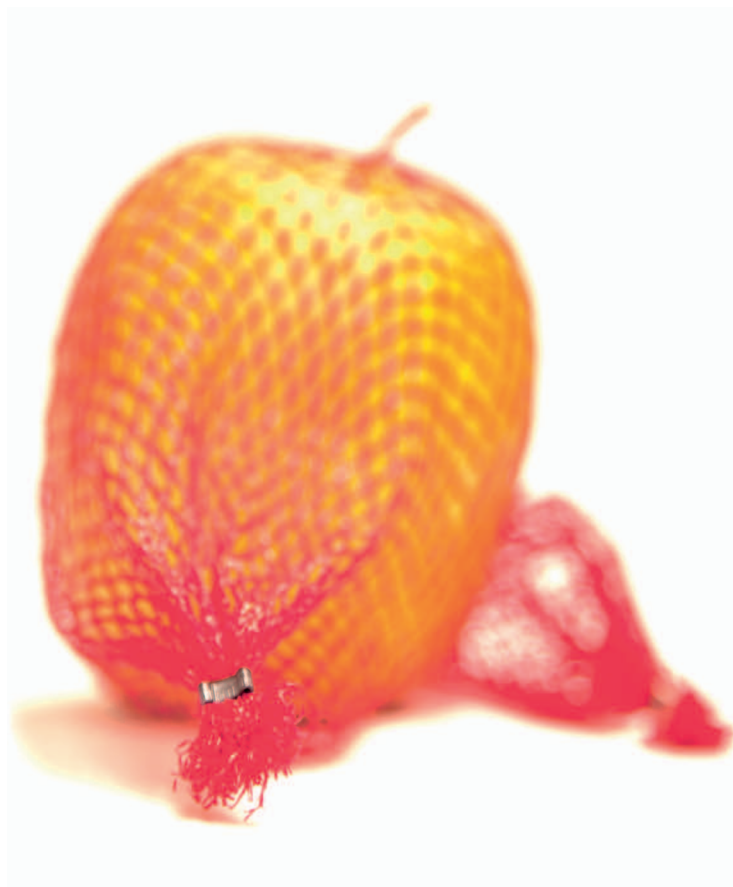
D4



D15

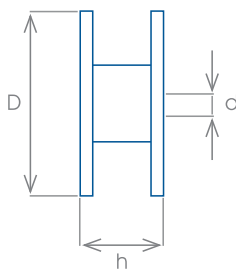


C155



Spools available per measurements			
Wire measurement mm.	D4	D15	C155
2,50 x 0,50	•	•	•
3,00 x 0,50	•	•	•

Measurements and spools for meshing machine					
Spool	Ø Extern. D	Ø Intern. d	Height h	Kg. Approx.	TYPE
D4	165	19	63	4-5	Plastic Spool
D15	240	98	100	15-17	Plastic Spool
C155	155	19	63	3-4	Plastic Spool



Palletisation according to spool				
Spool	Pallet dimensions Width/length/height	Units per box	Boxes per pallet	Approx. pallet weight
D4	1000/700/520	5	20	500 Kg.
D15	1000/700/640	1	30	500 Kg.
C155	1000/700/640	5	20	500 Kg.